



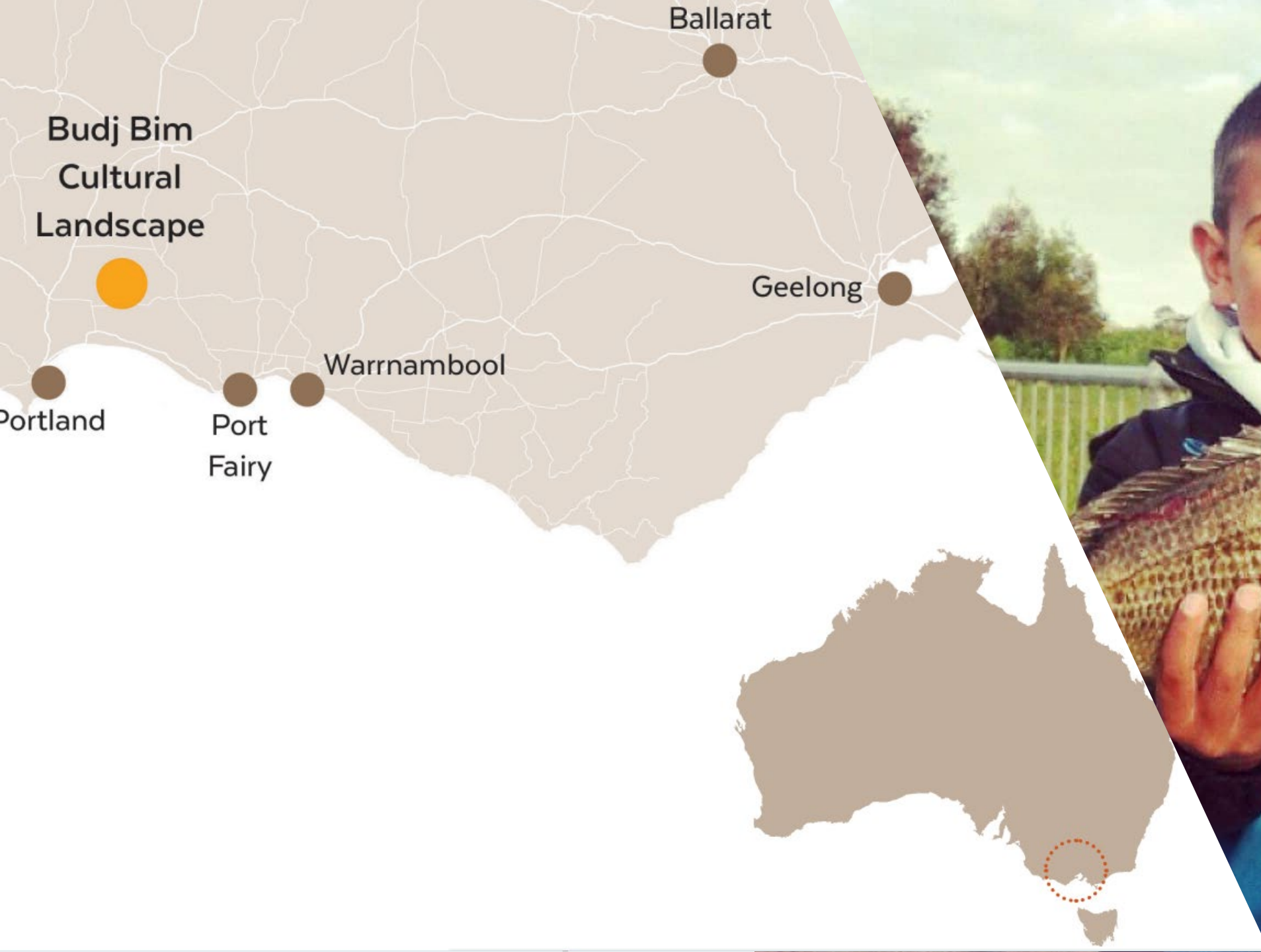
budj bim

CULTURAL LANDSCAPE

GUNDITJMARA
COUNTRY



a Journey Towards World Heritage
Listing



- 1951 – Lake Condah Mission land was revoked from the community and given to white returned soldiers
- 1954 – Lake Condah drained for agriculture
- 1957 – Lake Condah Mission Church knocked down by local government



- 1981 – Onus V Alcoa
- 1984 – Kerrup Jmara Elders Aboriginal Corporation (Land management and tourism)
- 1988 – Handback of Lake Condah Aboriginal Mission and Allambie property
- 1993 – Lake Condah Management Plan by Kerrup Jmara Elders Aboriginal Corporation
- 1994 – Muldoons property returned
- 1995 – Vaughans property returned



Lake Condah comes to life after 66 years

By Prue Powell

Having been dispossessed twice from their land in 1841 by European invasion, and in 1919 with the closure of the Lake Condah Mission, the Kerrup-Jmara Aborigines are now in control of part of their heritage again.

The Lake Condah Mission was re-opened and the management of it handed over to the Kerrup-Jmara Aboriginal Elders Co-operative by the Department of Conservation, Forests and Lands minister, Ms Joan Kirner, at a historical ceremony on Saturday.

Ms Kirner said although it was not a sunny day for the celebration, she quoted words of tribal elder, Ms Iris Gardiner: "There is sunshine in our hearts."

She also quoted a line from a poem written by tribal member, Brian Lovett: "Our children have come home."

The "project" Ms Kirner was handing over to the Kerrup-Jmara elders is the old Lake Condah mission site and part of the surrounding land which was Kerrup-Jmara tribal land long before Europeans arrived and imposed their laws and restrictions on it.

Before the mission was built, the Kerrup-Jmara tribe camped on the shores of Lake Condah, building stone huts from basalt rock, and catching fish in an elaborate system of canals and fish traps.

The mission was set up in the 1860s by the Church of England and in 1869, 826 ha were set aside as a reserve for them.

In 1885, another 692 ha were added to preserve Aboriginal hunting grounds next to Lake Condah.

However, by 1896, numbers at the mission had lessened and part of the land reserve was revoked.

In 1919, it was officially closed, forcing the remaining Aborigines to move away.

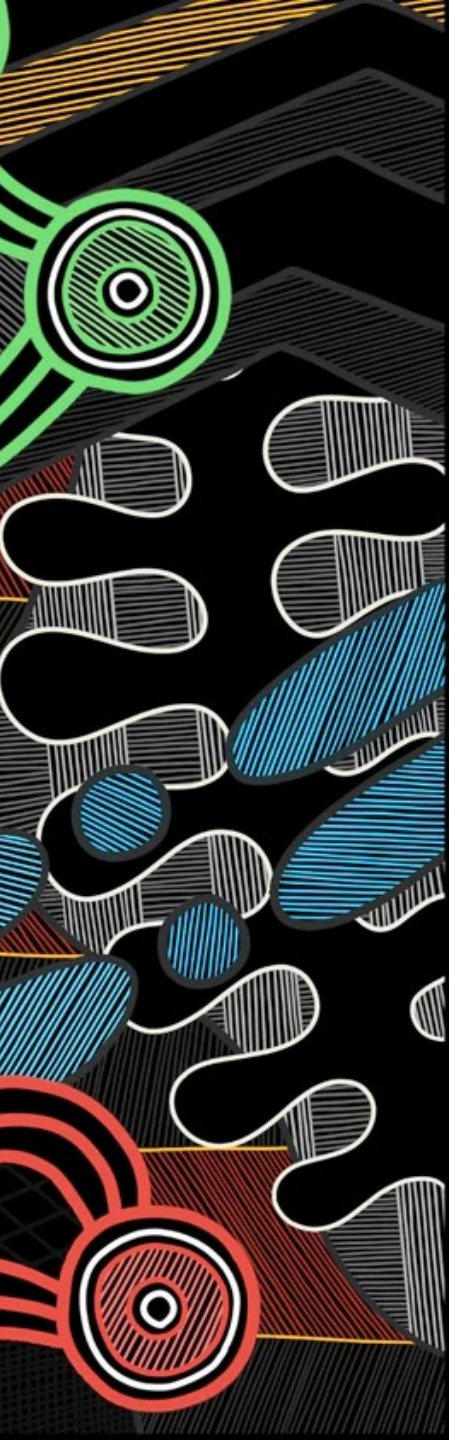
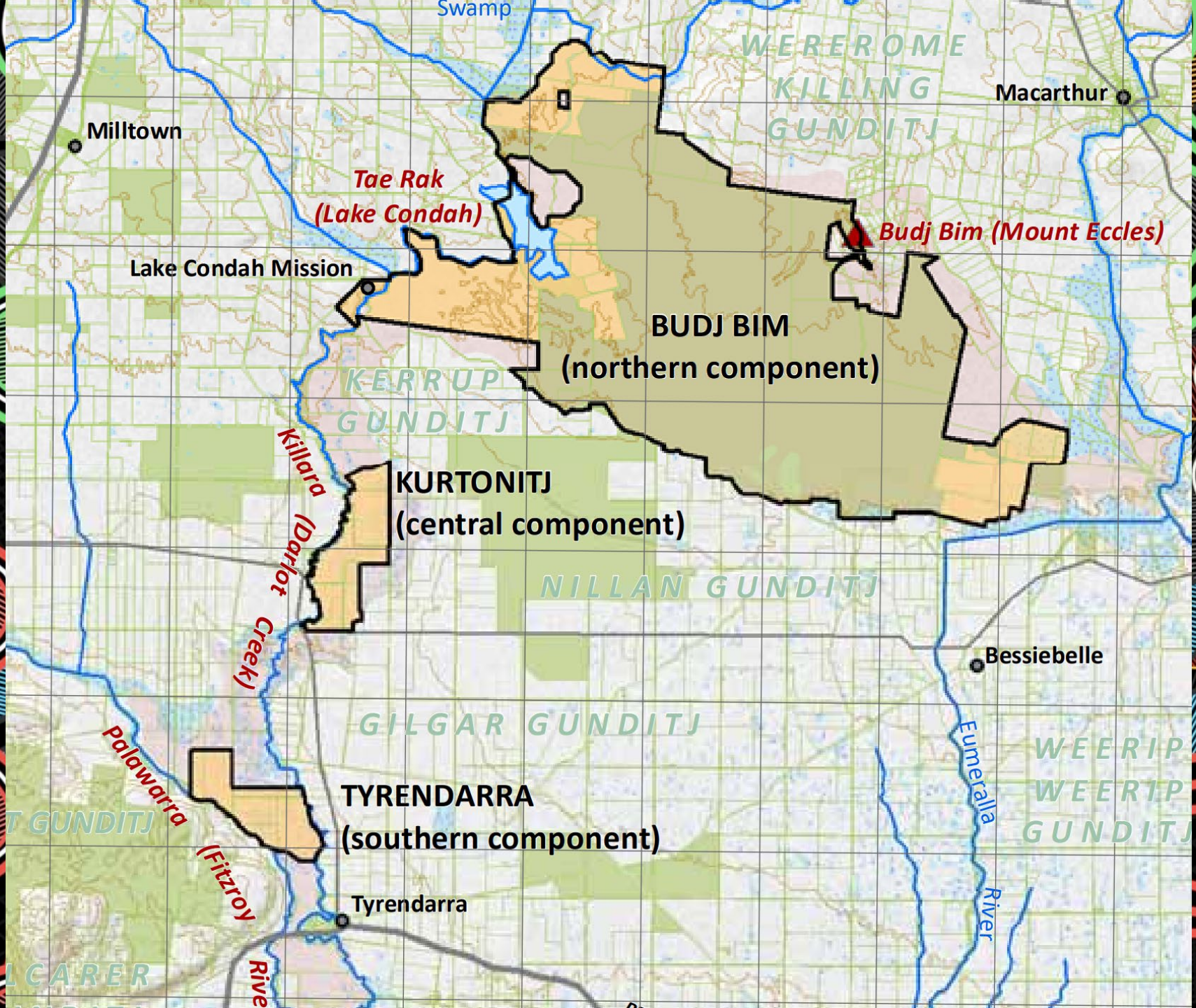


- **1999 – Lake Condah Mission and other Aboriginal properties transferred to Winda Mara Aboriginal Corporation. Budj Bim Tours started by Winda Mara Co-op.**
- **1999 – Tyrendarra property returned**
- **2002 – Lake Condah Sustainable Development Project**
- **2003 – Tyrendarra Indigenous Protected Area declared**
- **2004 – National Heritage listing (Budj Bim National Park and other Aboriginal owned properties)**
- **2006 – Kurtonitj property returned**
- **2007 – Gunditjmara Native Title Determination, Co-operative management of Budj Bim National Park via Budj Bim Council**
- **2008 – Lake Condah and Peters properties returned**



- 2010 – Reflooding of Lake Condah (partnered with Catchment Management Authority, Dept Environment Land Water Planning)(drained in 1954)
- 2010 – Lake Gorrie returned
- 2013 – Bryants property returned
- 2015 – Budj Bim IPA Plan
- 2015 – Ngootyoong Mirring Ngootyoong Maar Plan (partnered with Parks Victoria)
- 2016 – Victorian State Government announced \$8 million to start works on the Budj Bim Masterplan
- 2019 – World Heritage listing of Budj Bim Cultural Landscape
- 2019 - A further \$5 million in 2019 for major works at the site to ready it for an expected visitor influx.
- 2022 - Budj Bim Cultural Landscape Management Plan 2022-2027













Budj Bim (NP)



Lake Condah (IPA)



Allambie (IPA)



Gorrie (IPA)



Kurtonitj (IPA)



Tyrendarra (IPA)



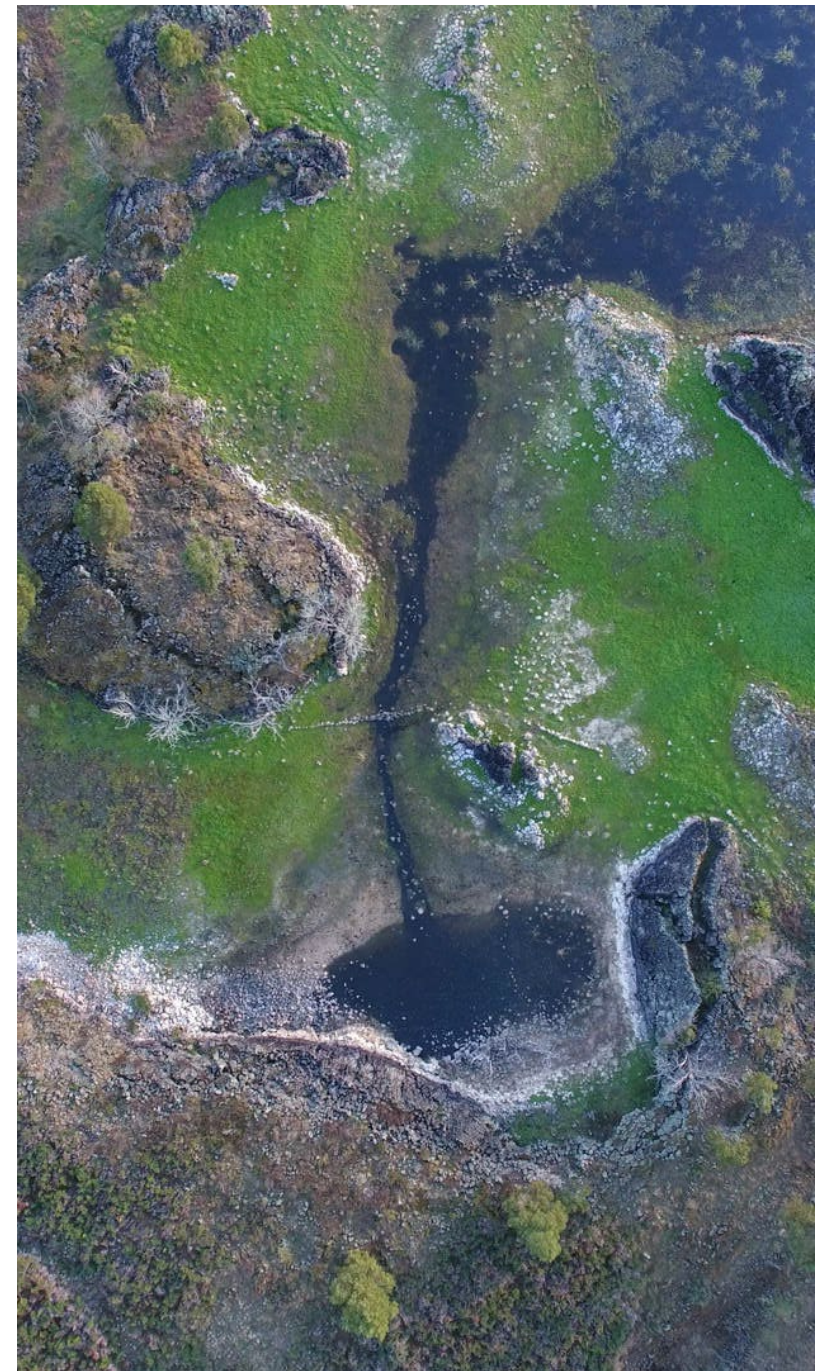
Tyrendarra (IPA)



budj bim

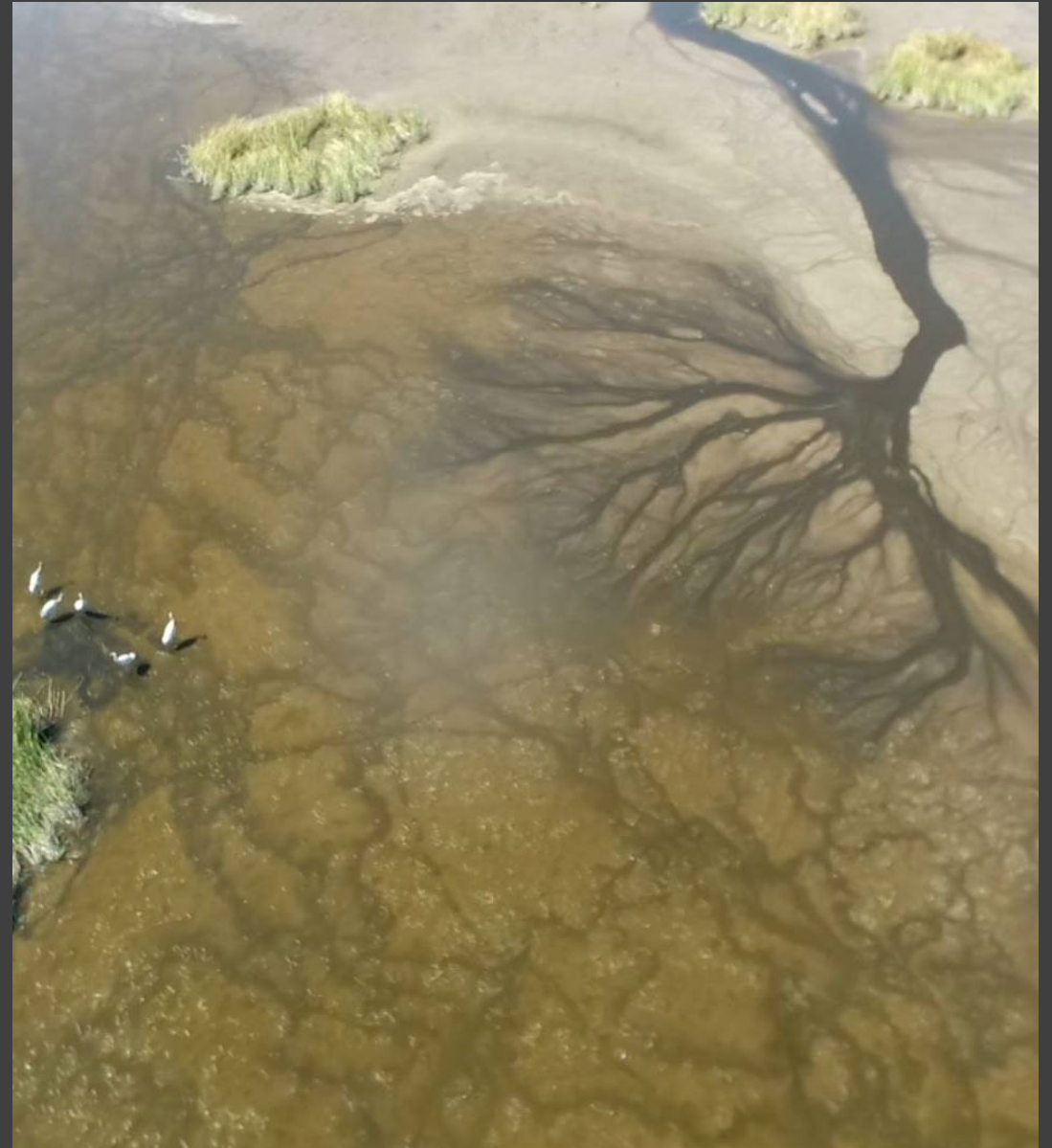
CULTURAL LANDSCAPE

GUNDITJMARA
COUNTRY



UNESCO Outstanding Universal Values

- Criterion (iii): The Budj Bim Cultural Landscape bears an exceptional testimony to the cultural traditions, knowledge, practices and ingenuity of the Gunditjmarara.
- Criterion (v): The continuing cultural landscape of the Budj Bim Cultural Landscape is an outstanding representative example of human interaction with the environment and testimony to the lives of the Gunditjmarara.



Muldoons Trap Complex

1

2

3

4

5

6

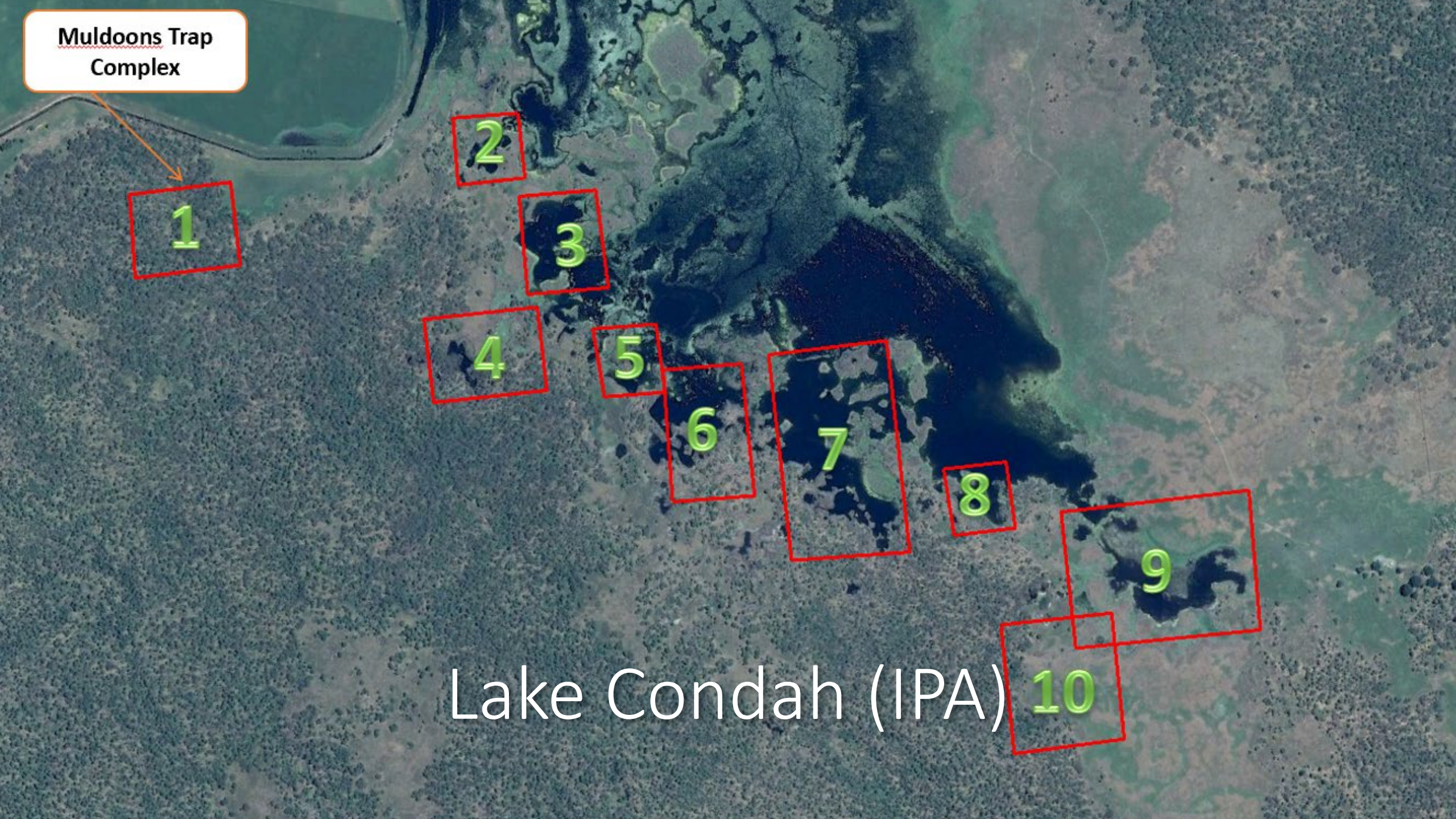
7

8

9

10

Lake Condah (IPA)



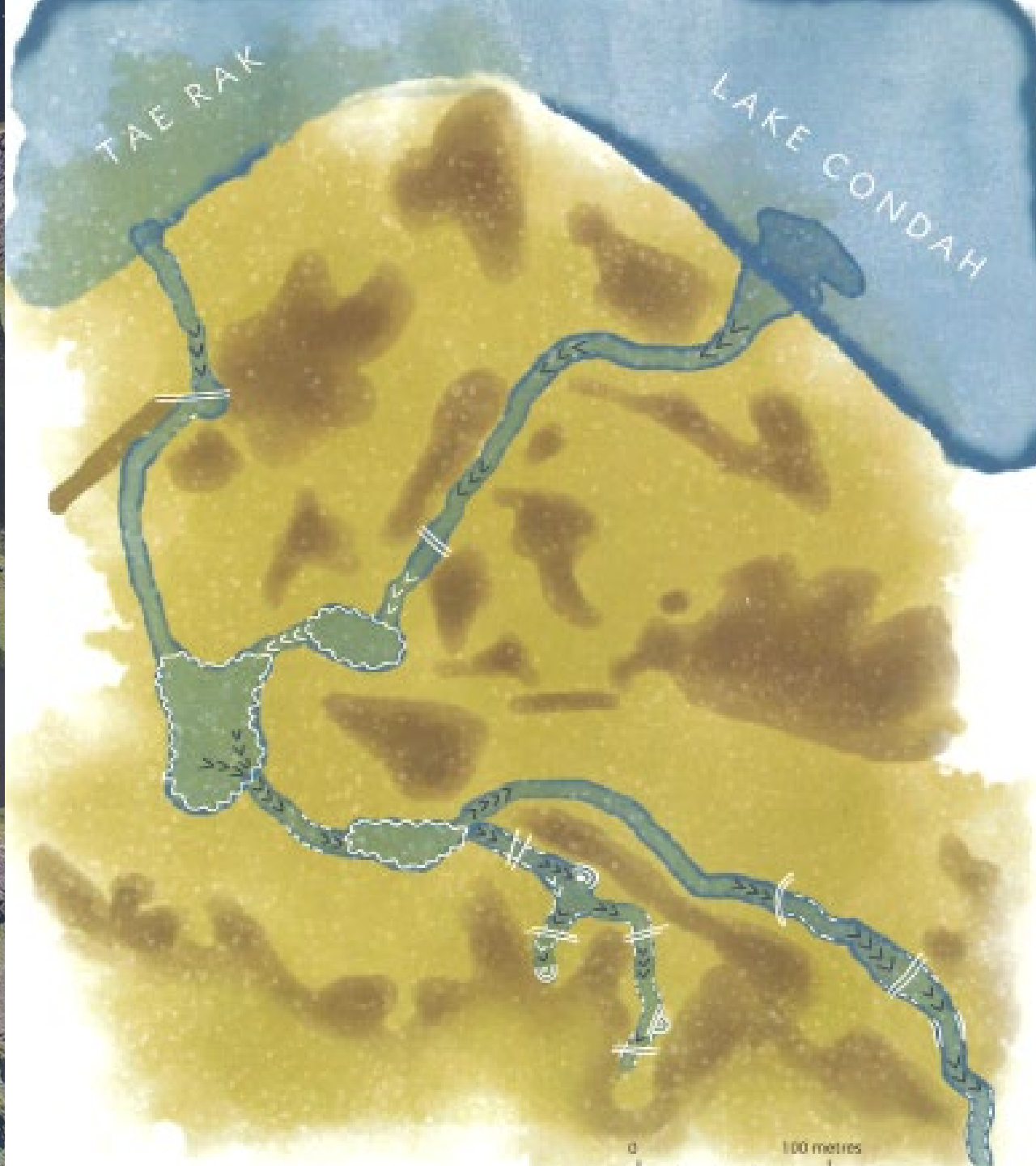












Moving Forward

- **2016 – Victorian State Government announced \$8 million to start works on the Budj Bim Masterplan**
- **2019 – World Heritage listing of Budj Bim Cultural Landscape**
- **2019 - A further \$5 million in 2019 for major works at the site to ready it for an expected visitor influx.**
- **2022 - Budj Bim Cultural Landscape Management Plan 2022-2027**





2020 – Gunditj Mirring Office and Keeping Place built at Lake Condah Mission



2022 – New Aquaculture Centre built at Lake Condah IPA

An aerial photograph of a cultural landscape. The central feature is a large, dark, irregularly shaped lake or wetland area. Surrounding this central area are numerous smaller, rectangular plots of land, some of which are green, suggesting agricultural or managed vegetation. The landscape is framed by a thick layer of white, fluffy clouds, which are more dense on the left and right sides, creating a sense of depth and atmosphere. The overall color palette is dominated by greens, browns, and whites.

Budj Bim Cultural Landscape Management Plan 2022-2027

GOVERNANCE, LEGISLATIVE AND MANAGEMENT FRAMEWORK

Customary Rights and Obligations	Gunditjmara Traditional Owners		
Governance, Decision-making and Administrative Body (proposed)	<p>Budj Bim Cultural Landscape World Heritage Steering Committee</p> <p>This group – with a majority of Gunditjmara Traditional Owners, will be established at such time as the Budj Bim Cultural Landscape is inscribed on the World Heritage List.</p>		
Governance, Decision-making and Administrative Body (current) (Part 5.C)	Gunditj Mirring Traditional Owners Aboriginal Corporation (GMTOAC)	Winda-Mara Aboriginal Corporation	Budj Bim Council
Area Covered and Protective Designation (Part 5.B)	Budj Bim Indigenous Protected Area, Lake Condah Mission	Tyrendarra Indigenous Protected Area	Budj Bim National Park
Ownership (Part 5.A)	GMTOAC	Winda-Mara Aboriginal Corporation	Victorian Government



BUDJ BIM



budj bim
CULTURAL LANDSCAPE

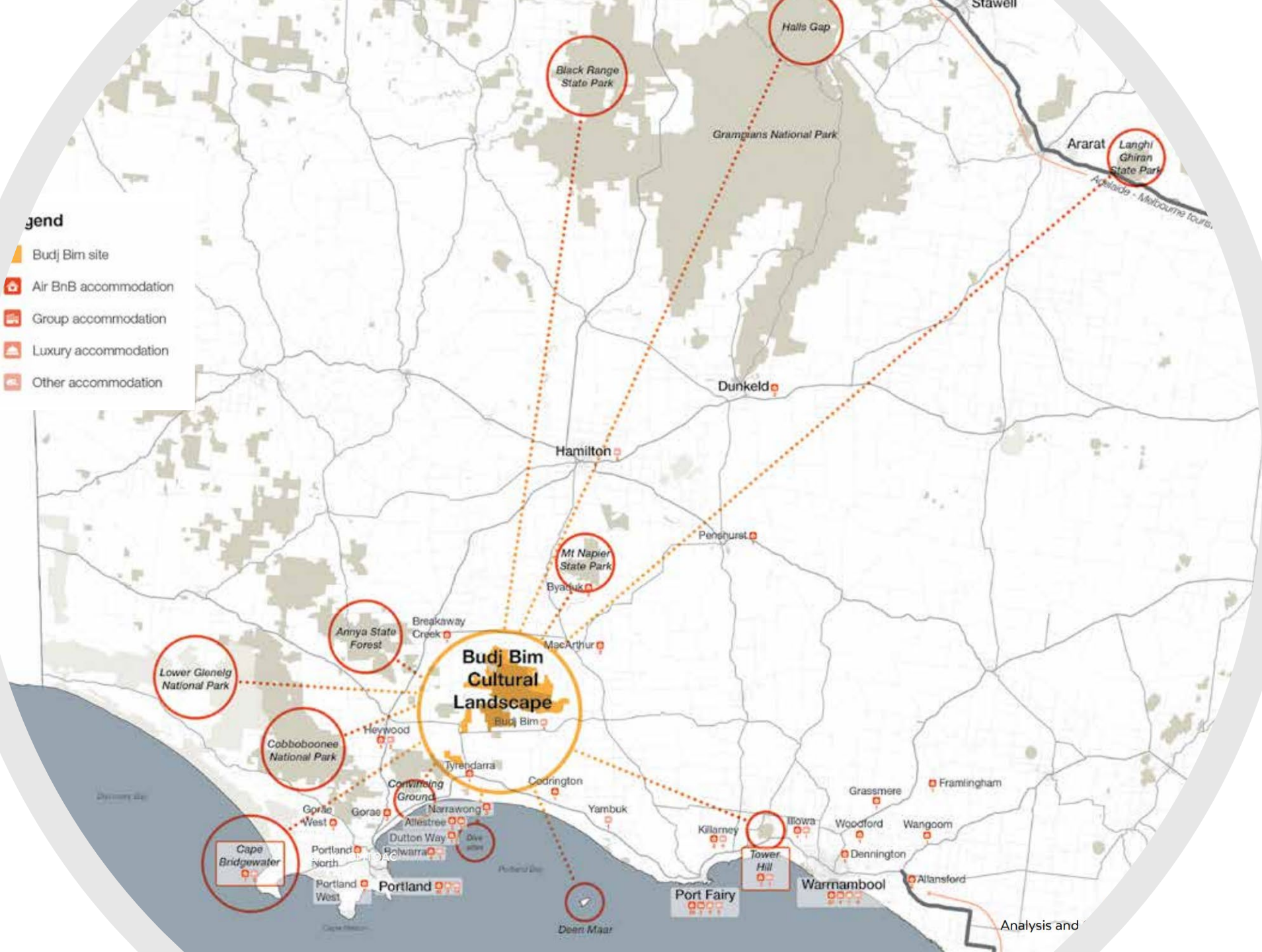
GUNDITJMARA
COUNTRY

CULTURAL LANDSCAPE MASTERPLAN 2022-2030



Legend

-  Budj Bim site
-  Air BnB accommodation
-  Group accommodation
-  Luxury accommodation
-  Other accommodation



Plan Drivers for 2030

- Keeping Gunditjmara people working on Country
- Protecting Gunditjmara culture
- Contributing to the wealth and wellbeing of Gunditjmara people, as individuals, families, and community
- Doing so sustainably and consistent with the Budj Bim Cultural Landscape values



